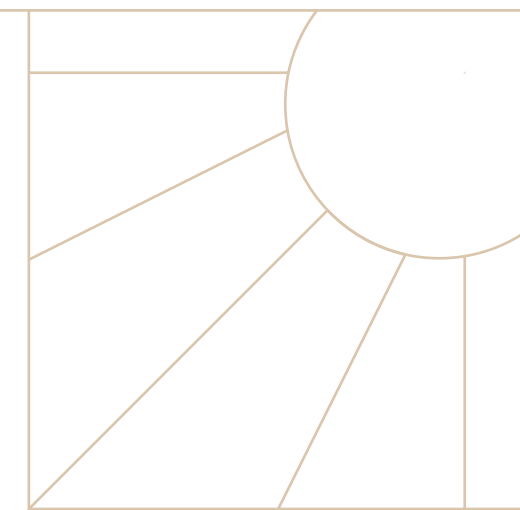




ARTHUR MEWS

◆◆◆ SW15 2NW ◆◆◆





INTRODUCTION

# BEAUTIFULLY DESIGNED HOMES

Nestled on a quiet street in the heart of Putney and just moments from the Thames, this development of 3 mews houses and 4 apartments combines calm, considered architecture with the warmth of a true community setting.

Computer-generated images (CGIs) are for illustrative purposes only and may not accurately represent final specifications.



LOCATION

# PUTNEY STRIKES THE PERFECT BALANCE

Arthur Mews offers rare tranquility just moments from London's heartbeat. Whether it's the daily commute or a weekend escape, everything you need is within easy reach. From riverside train rides to leafy cycle paths, your journey always starts in calm.



\* Travel times are approximate and provided for guidance only. Actual journey times may vary depending on time of day and transport conditions.



TRAVEL & CONNECTIVITY

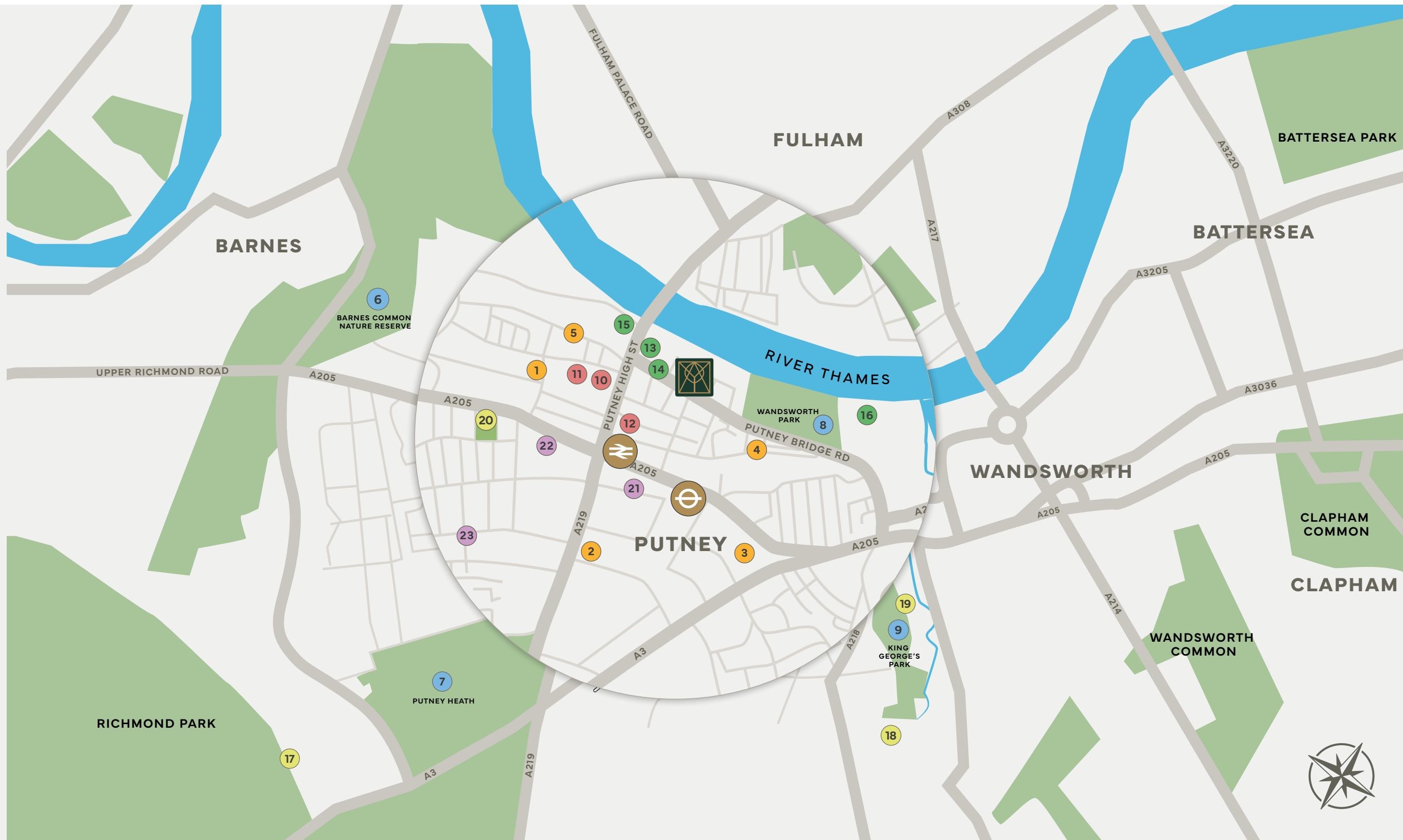
# QUIETLY CONNECTED

From morning commutes to weekend escapes, Arthur Mews is perfectly positioned with convenient rail and tube links to connect you to everything that matters.

-  Putney Station 5 mins walk\*
-  East Putney Underground (District Line) 8 mins walk\*
-  Heathrow Airport 30 mins by car\*
-  Gatwick Airport 45 mins via Clapham\*



- **SCHOOLS**
  1. Hotham Primary School
  2. Putney High School
  3. Ashcroft Technology Academy
  4. Brandlehow School
  5. St Mary's C of E Primary School
- **PARKS**
  6. Barnes Common
  7. Putney Heath
  8. Wandsworth Park
  9. King Georges Park
- **SHOPS**
  10. Putney Exchange
  11. Waitrose & Partners
  12. Sainsbury's
- **RESTAURANTS & CAFES**
  13. Coppa Club
  14. The Dynamo
  15. Putney Pies
  16. Wandsworth Riverside Restaurant
- **LEISURE**
  17. Richmond Park Golf Course
  18. Nuffield Health
  19. All Star Padel
  20. Putney Lawn Tennis
- **DOCTORS SURGERIES**
  21. The Heath Practice
  22. Putneymead Medical Practice
  23. Chartfield Surgery
- TRAVEL**
  - Putney
  - East Putney





RETAIL, DINING & LIFESTYLE

# BOUTIQUE LIVING

Start the day with a flat white at The Dynamo, grab a fresh sourdough from Gail's, and end with dinner on the terrace at Coppa Club. Putney's mix of local charm and understated luxury makes everyday routines feel like something more.

Coppa Club

Home SW15

Bosa Lounge

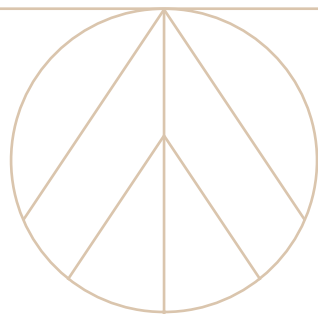
Blades Restaurant

Putney Park Golf Club

Roehampton Club

Hybrid Fitness





GREEN SPACES

# SPACE TO BREATHE

From lazy Sunday picnics to brisk morning jogs, the green lungs of South-West London are yours to explore. Richmond Park's deer-dotted landscape, Wandsworth Park's riverside charm, and Putney Heath's shaded woodland all sit within minutes of Arthur Mews.

**Wandsworth Park**

**King George's Park**

**Putney Heath**

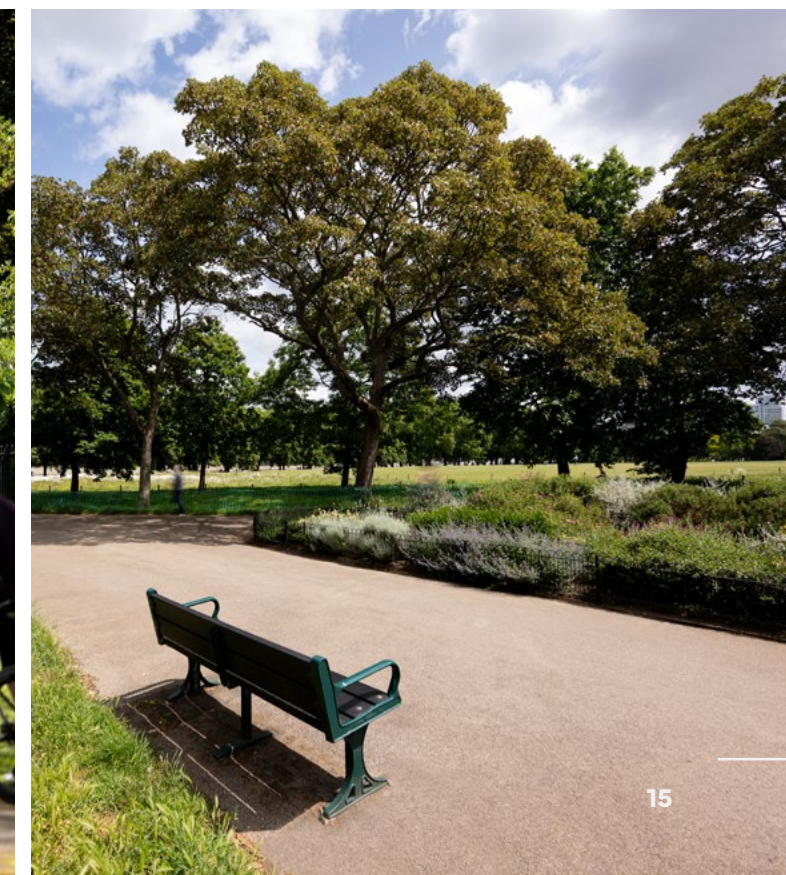
**Leader's Gardens**

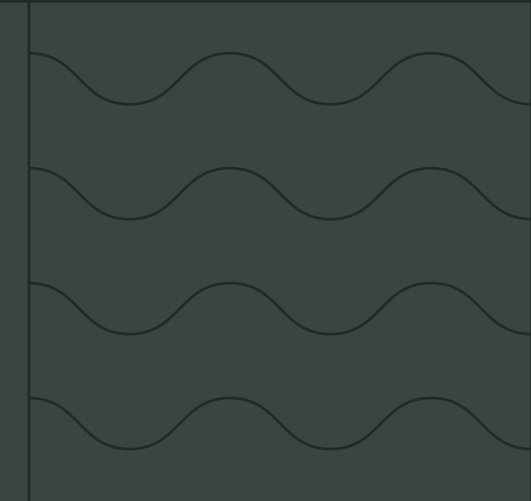
**Richmond Park**

**Wandsworth Common**

**Barnes Common**

**Bishop's Park (Fulham)**





RIVERSIDE LIVING

# LIFE BY THE WATER

Here, the river isn't just a view, it's part of daily life. Watch the Oxford-Cambridge Boat Race glide by, sip a glass of wine by the towpath, or start your mornings with a walk by the water. The Thames adds space, rhythm, and reflection to every day.

**Hurlingham Yacht Club**

**Thames Rowing Club**

**Westminster School Boat Club**



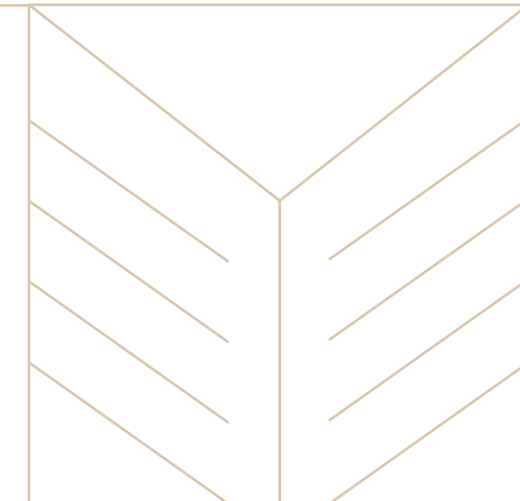
FOR THE MODERN FAMILY

# A PLACE TO GROW

At Arthur Mews, we've created homes that support real lives, not just lifestyles. Designed with growing families in mind, each home offers a sense of sanctuary and seclusion, without sacrificing connectivity or convenience.

The mews layout provides a safe and peaceful setting, while nearby parks, schools and the riverfront create opportunities to explore, learn and unwind, *together*.





## EDUCATION

# LEARNING AT YOUR DOORSTEP

With some of London's most respected schools just a short walk away, families at Arthur Mews enjoy more than a home, they invest in a foundation for the future. School runs are shorter, options are broader, and the journey begins at your doorstep.

### **Hotham Primary School**

Ofsted "Outstanding", bilingual curriculum

### **Putney High School**

One of London's top independent schools

### **Ashcroft Technology Academy**

High-performing secondary

FLOORPLANS & SPECIFICATIONS

# DESIGNED FOR LIFE

Every square metre of Arthur Mews has been crafted with thought and purpose, from smart layouts and ample storage, to tactile finishes and family-friendly flow.





THE DEVELOPMENT

# TIMELESS DESIGN MEETS MODERN COMFORT

Ideal for families, professionals or downsizers alike, Arthur Mews brings a sense of calm and character to contemporary London living.

Computer-generated images (CGIs) are for illustrative purposes only and may not accurately represent final specifications.

**FLAT 1**  
**GROUND FLOOR**

**TWO BEDROOM**

INTERNAL AREA

65.3 sq m / 703 sq ft

LIVING / DINING / KITCHEN AREA

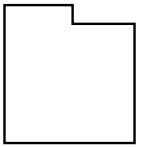
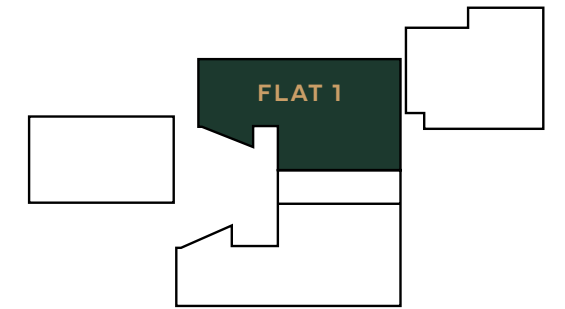
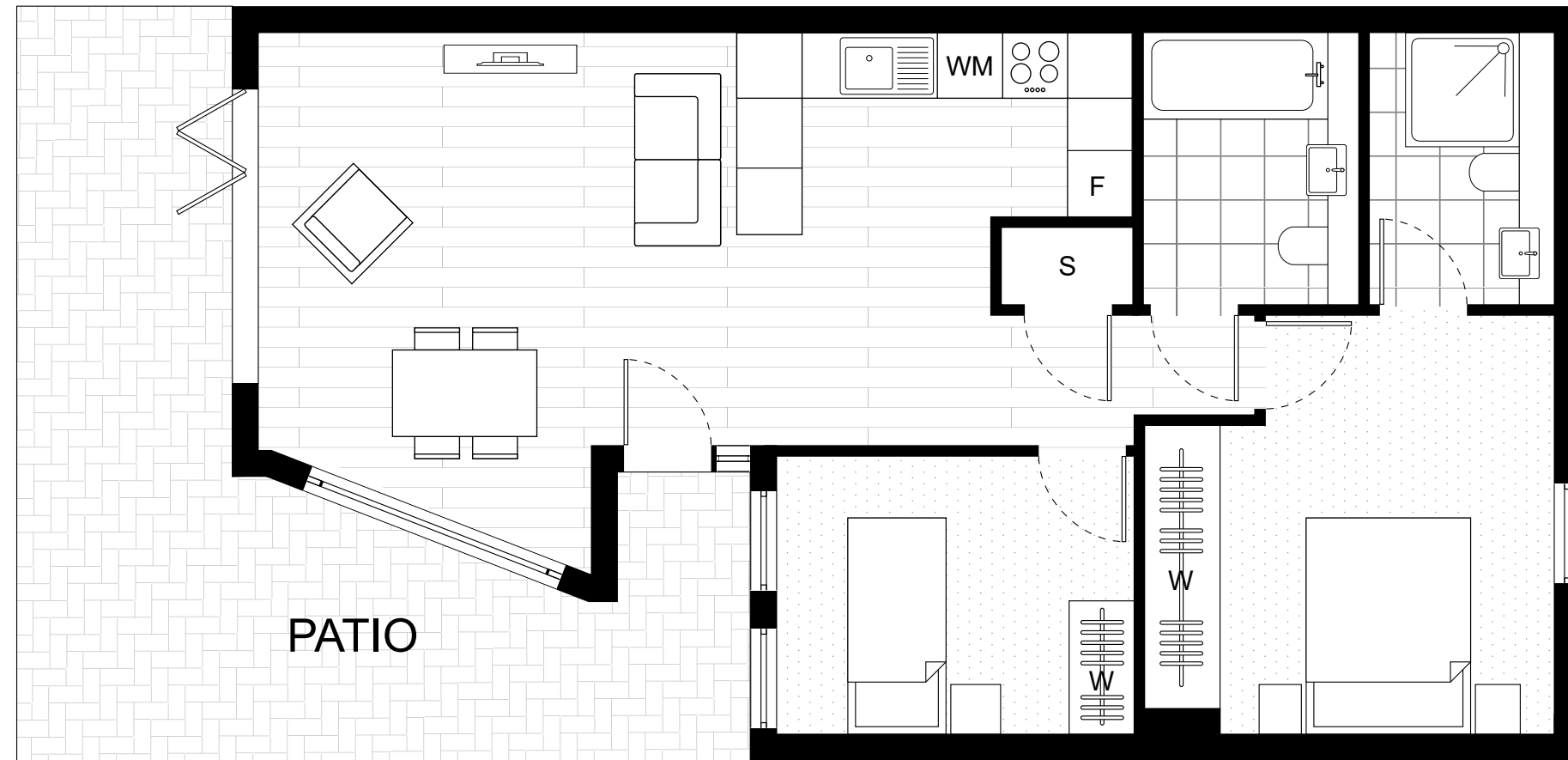
8028 x 4265 mm

BEDROOM 1

3760 x 3850 mm

BEDROOM 2

3280 x 2555 mm



- F** ..... FRIDGE
- DW** ..... DISH WASHER
- WM** ..... WASHING MACHINE
- TD** ..... TUMBLE DRYER
- S** ..... STORAGE
- C** ..... CUPBOARD
- W** ..... WARDROBE
- B** ..... BALCONY

**FLAT 2**  
**GROUND FLOOR**

**TWO BEDROOM**

INTERNAL AREA

64.4 sq m / 693 sq ft

LIVING / DINING / KITCHEN AREA

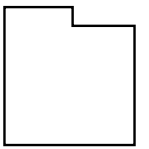
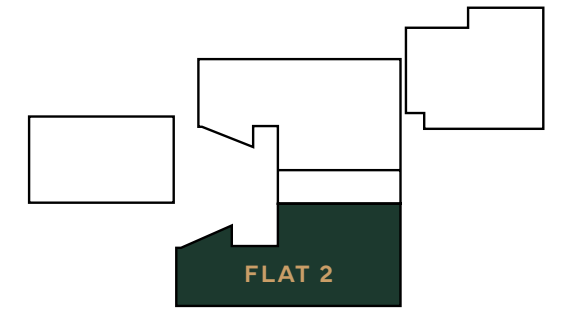
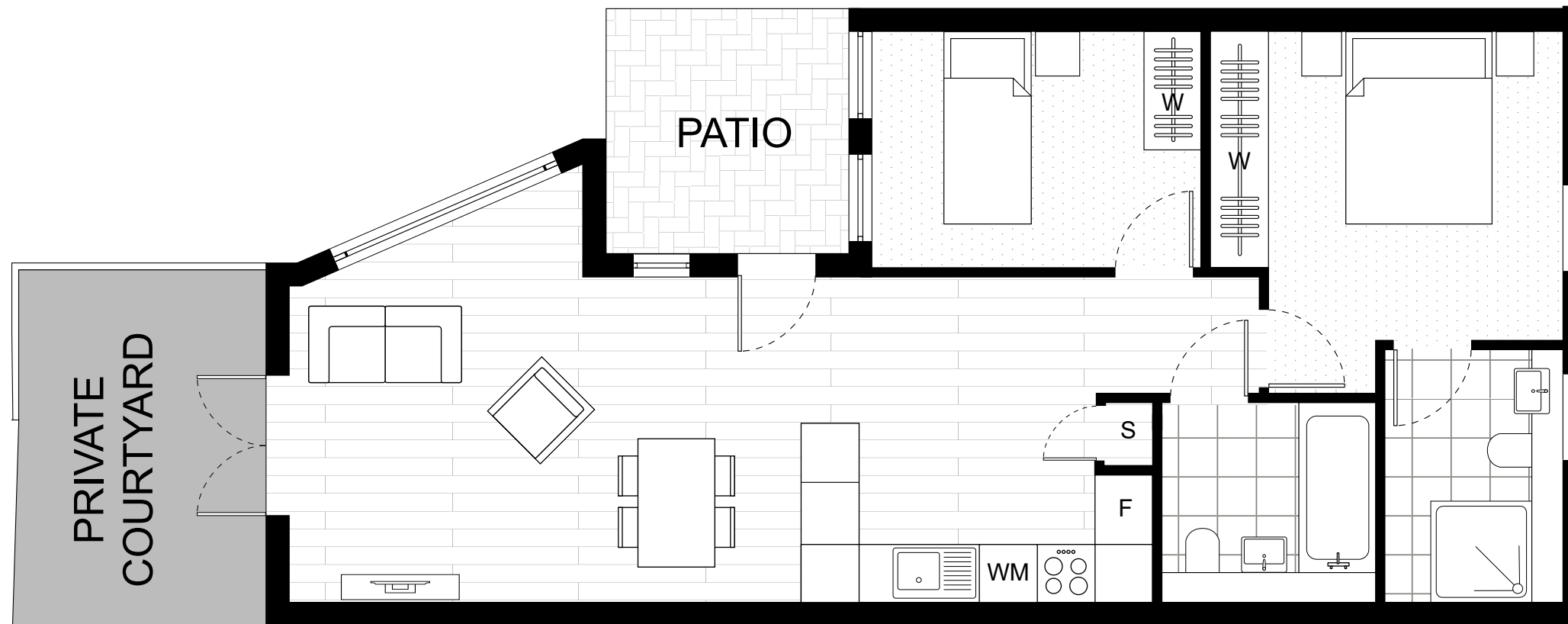
8900 x 4500 mm

BEDROOM 1

3725 x 3834 mm

BEDROOM 2

3390 x 2442 mm



- F ..... FRIDGE
- DW ..... DISH WASHER
- WM ..... WASHING MACHINE
- TD ..... TUMBLE DRYER
- S ..... STORAGE
- C ..... CUPBOARD
- W ..... WARDROBE
- B ..... BALCONY

# FLAT 3

## FIRST FLOOR

ONE BEDROOM

INTERNAL AREA

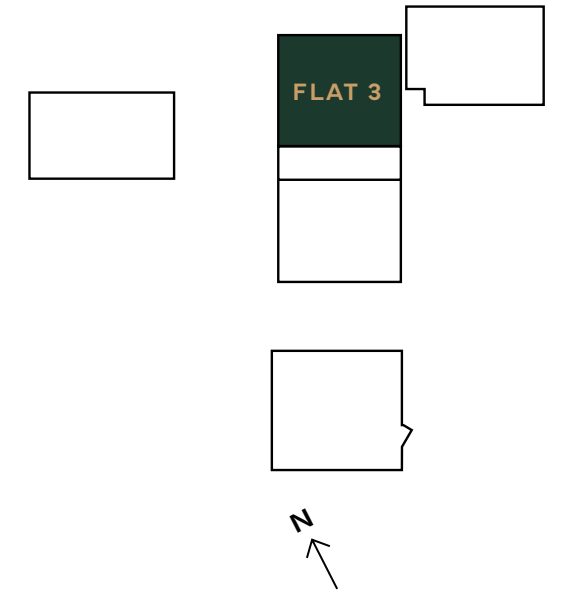
45.9 sq m / 494 sq ft

LIVING / DINING / KITCHEN AREA

7139 x 3106 mm

BEDROOM 1

4520 x 3520 mm



- F ..... FRIDGE
- DW ..... DISH WASHER
- WM ..... WASHING MACHINE
- TD ..... TUMBLE DRYER
- S ..... STORAGE
- C ..... CUPBOARD
- W ..... WARDROBE
- B ..... BALCONY

# FLAT 4

## FIRST & SECOND FLOOR

### TWO BEDROOM

INTERNAL AREA

99.2 sq m / 1068 sq ft

LIVING / DINING / KITCHEN AREA

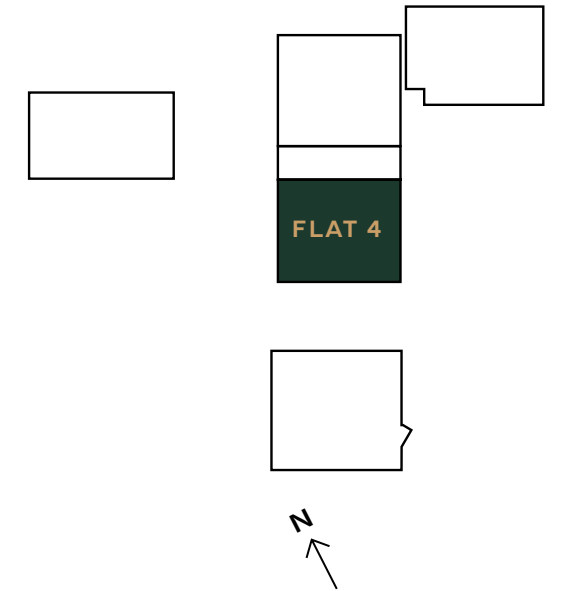
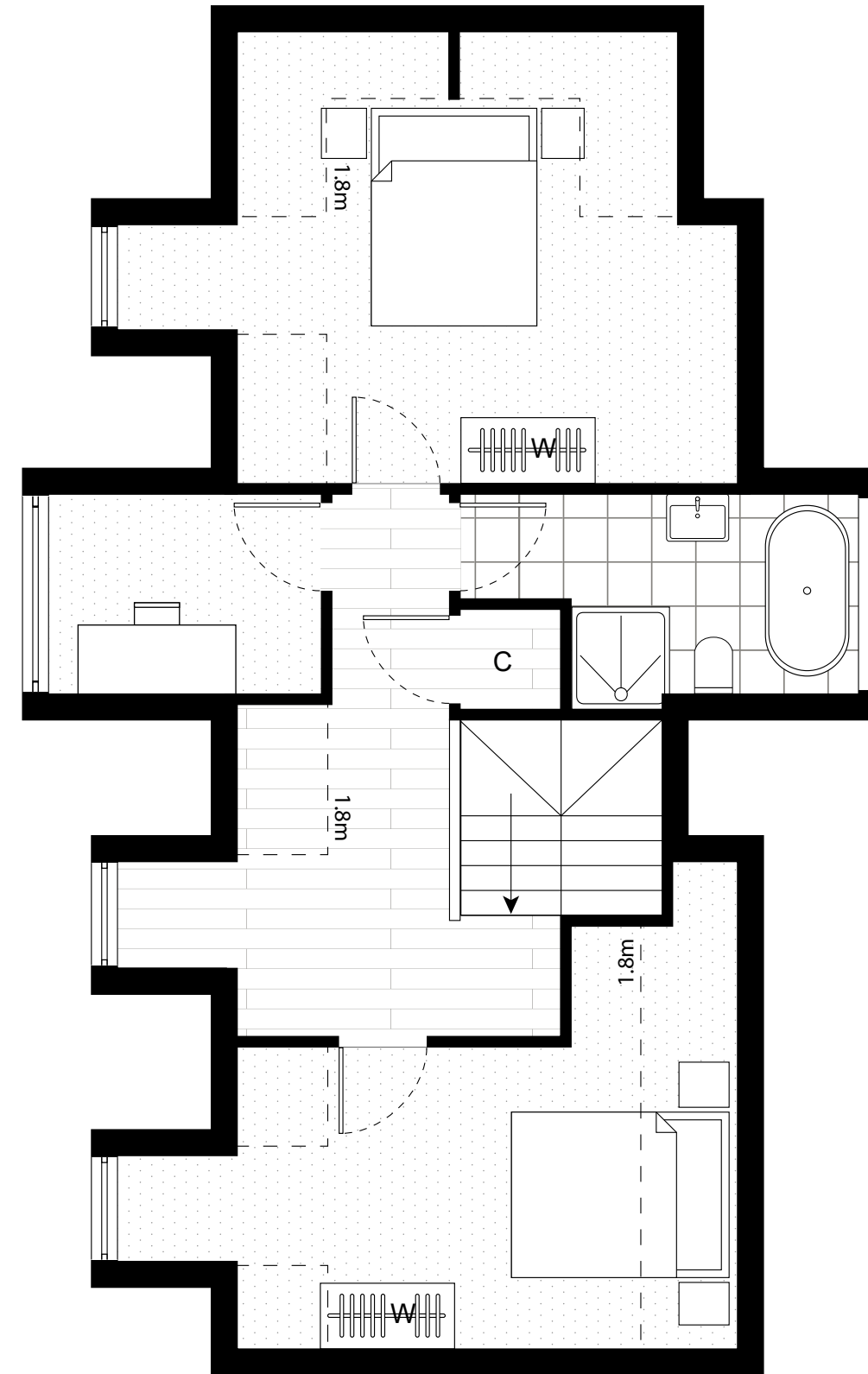
5170 x 5370 mm

BEDROOM 1

5660 x 3235 mm

BEDROOM 2

5660 x 4400 mm



- F ..... FRIDGE
- DW ..... DISH WASHER
- WM ..... WASHING MACHINE
- TD ..... TUMBLE DRYER
- S ..... STORAGE
- C ..... CUPBOARD
- W ..... WARDROBE
- B ..... BALCONY

# HOUSE 1

## GROUND & FIRST FLOOR

### THREE BEDROOM

INTERNAL AREA

108.8 sq m / 1171 sq ft

LIVING / DINING / KITCHEN AREA

7560 x 4560 mm

BEDROOM 1

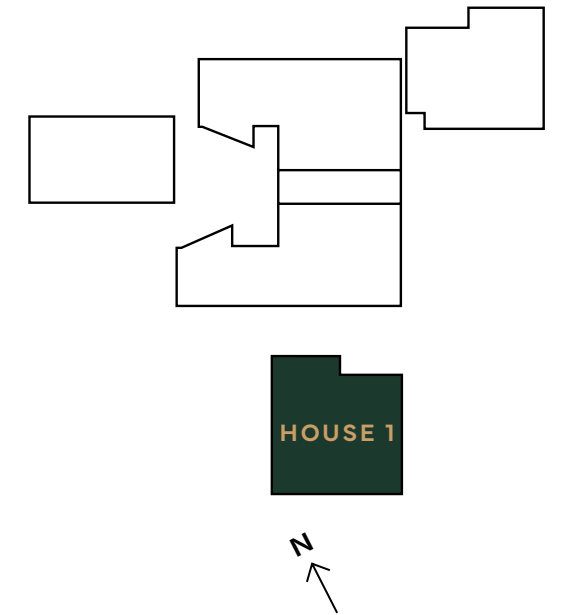
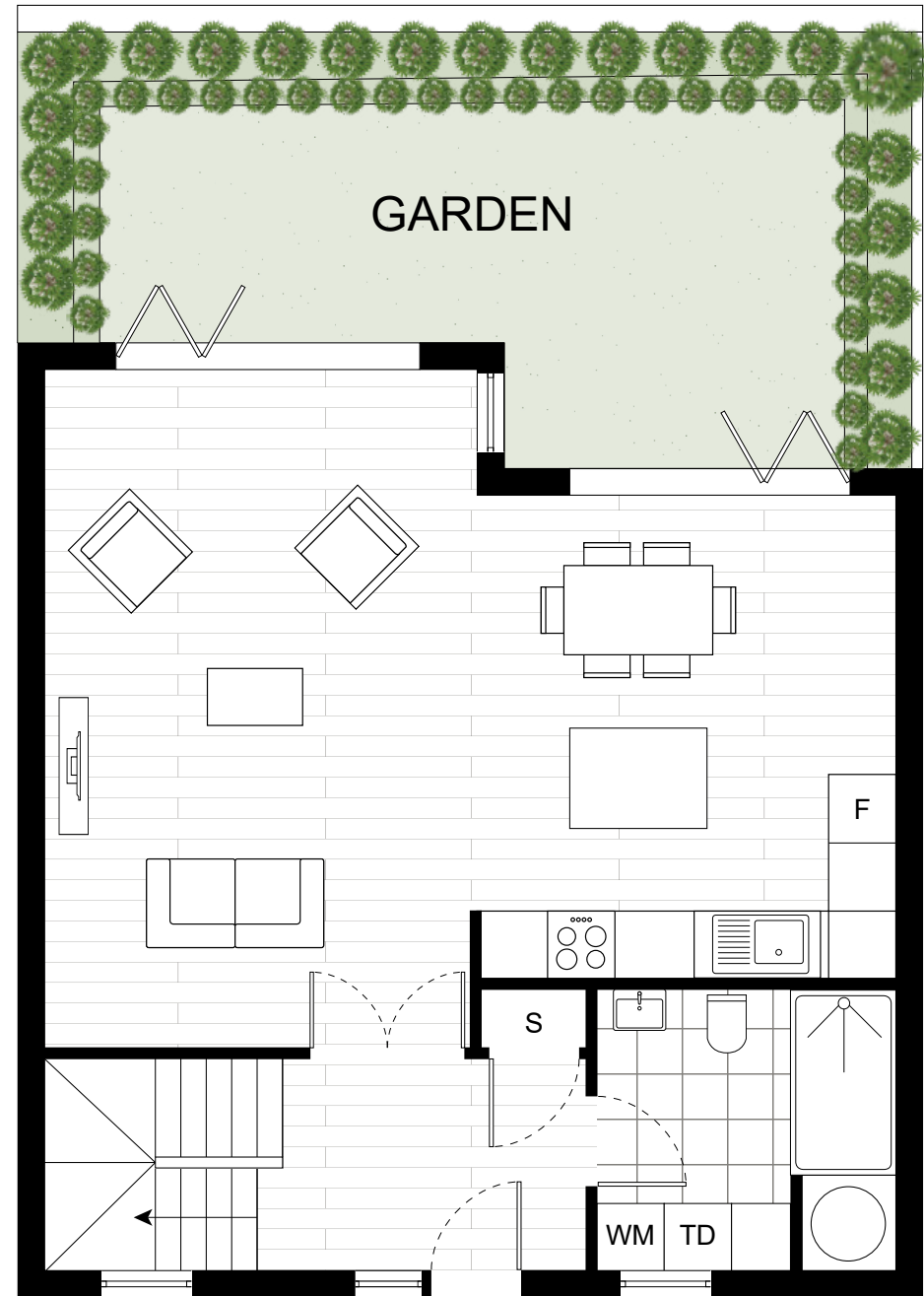
4340 x 2800 mm

BEDROOM 2

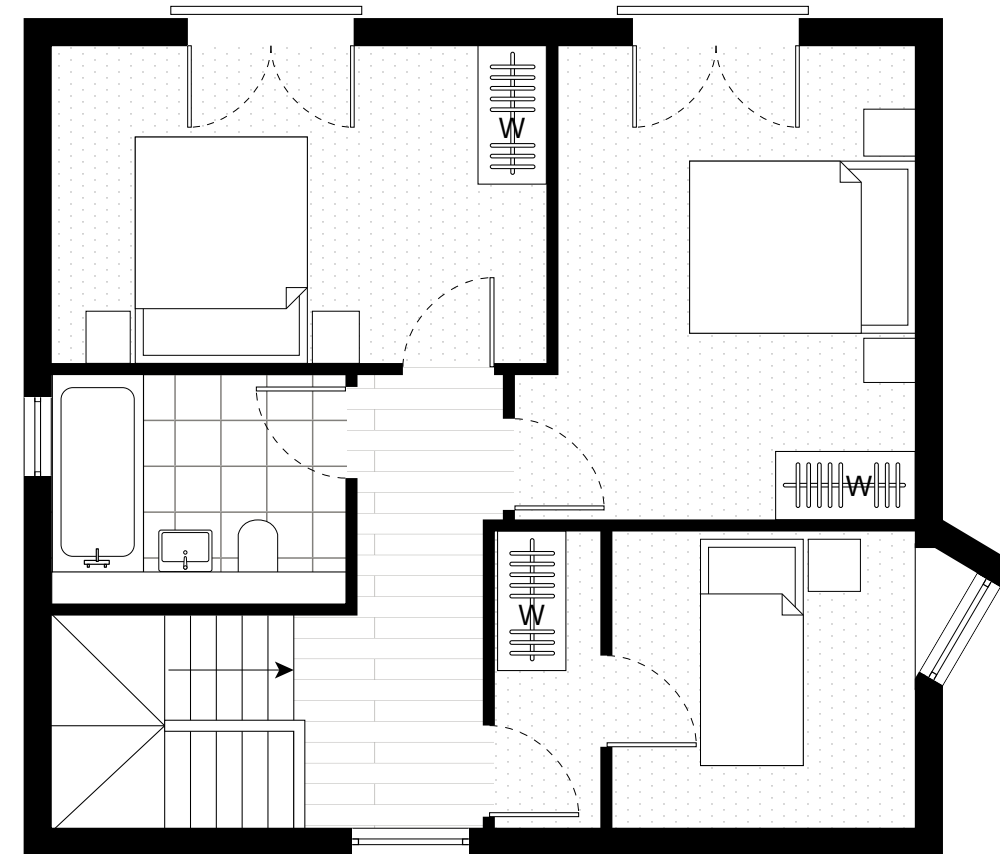
3510 x 4180 mm

BEDROOM 3

3690 x 2615 mm



- F ..... FRIDGE
- DW ..... DISH WASHER
- WM ..... WASHING MACHINE
- TD ..... TUMBLE DRYER
- S ..... STORAGE
- C ..... CUPBOARD
- W ..... WARDROBE
- B ..... BALCONY



# HOUSE 2

## GROUND & FIRST FLOOR

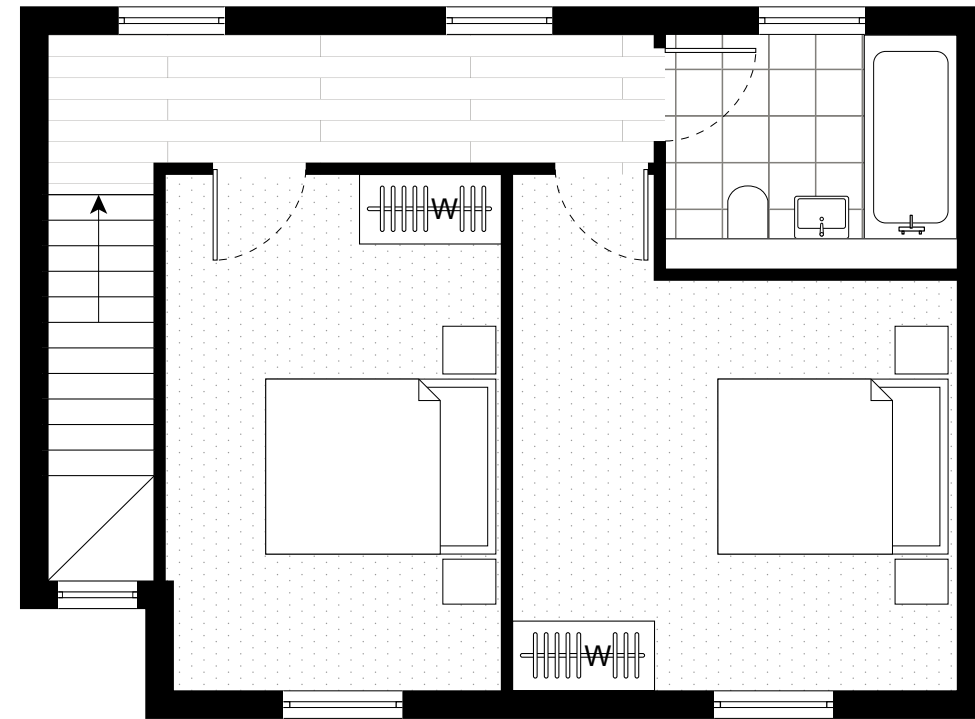
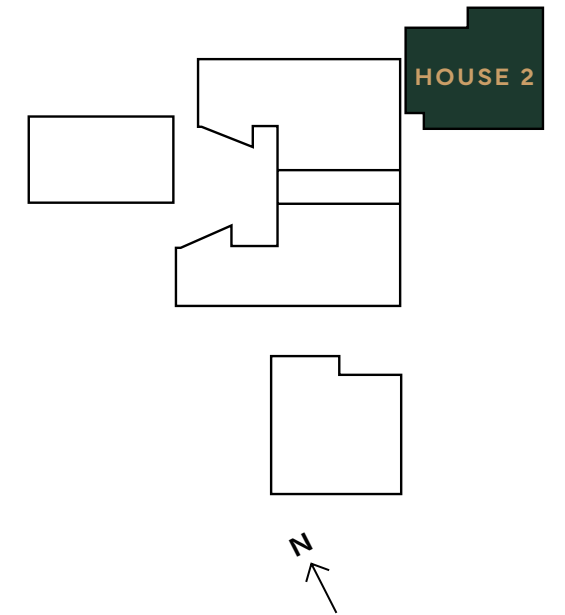
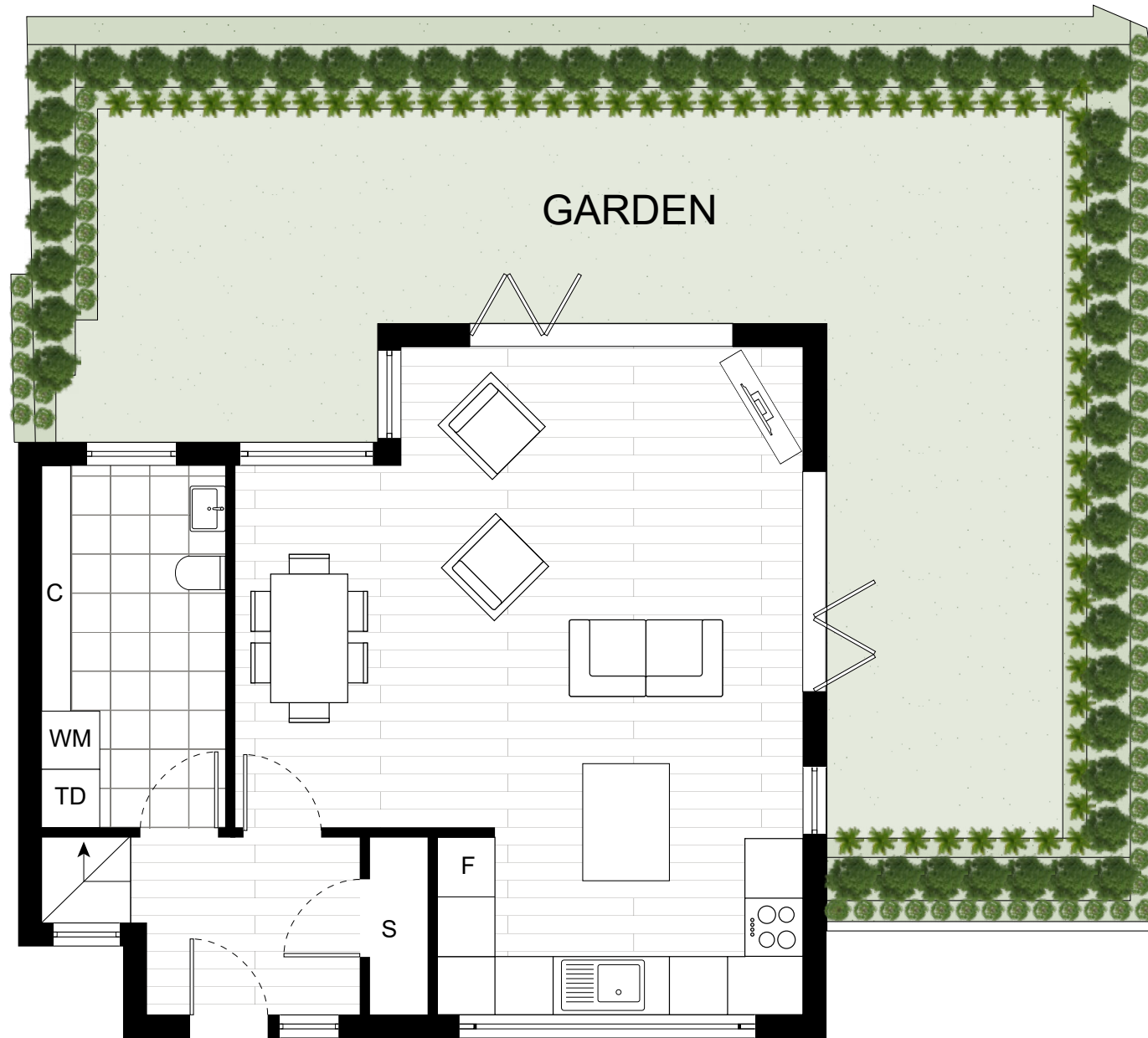
### TWO BEDROOM

INTERNAL AREA  
91.6 sq m / 986 sq ft

LIVING / DINING / KITCHEN AREA  
5850 x 6890 mm

BEDROOM 1  
2895 x 4455 mm

BEDROOM 2  
3510 x 4455 mm



- F ..... FRIDGE
- DW ..... DISH WASHER
- WM ..... WASHING MACHINE
- TD ..... TUMBLE DRYER
- S ..... STORAGE
- C ..... CUPBOARD
- W ..... WARDROBE
- B ..... BALCONY

# HOUSE 3

## GROUND & FIRST FLOOR

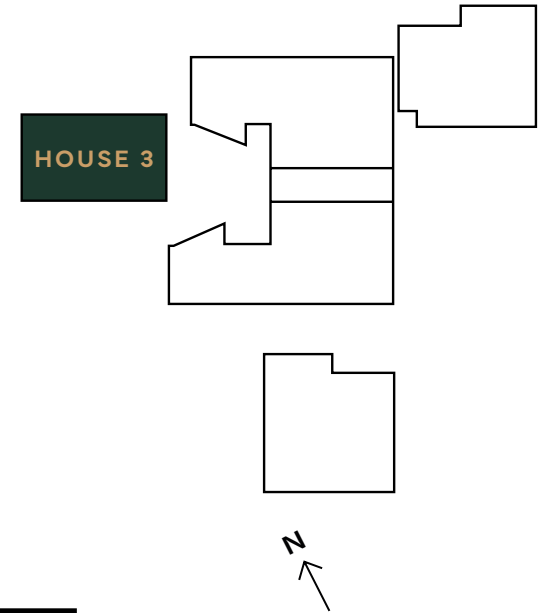
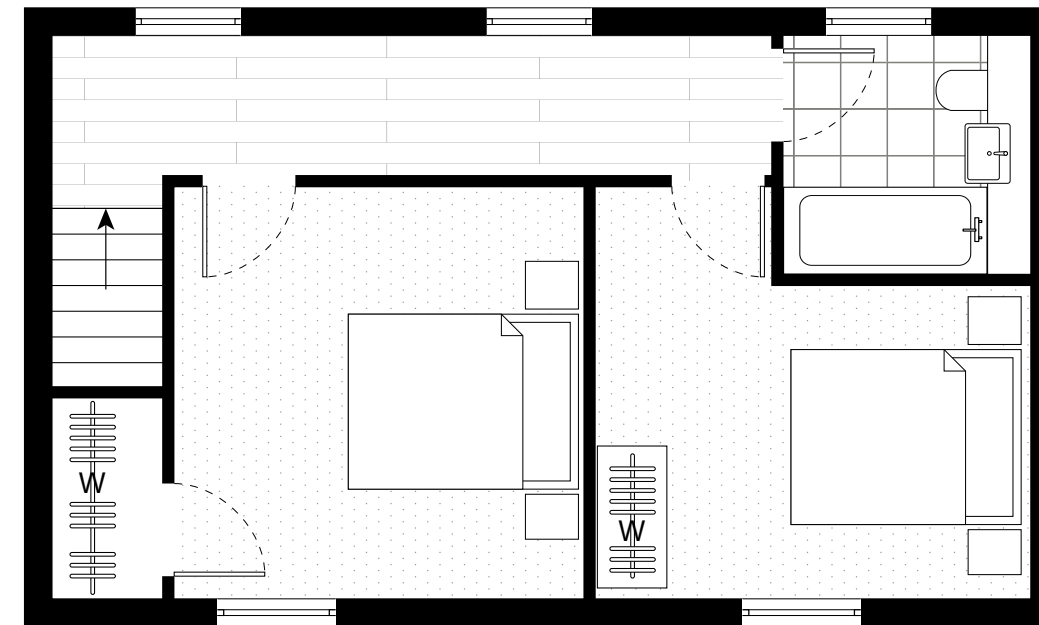
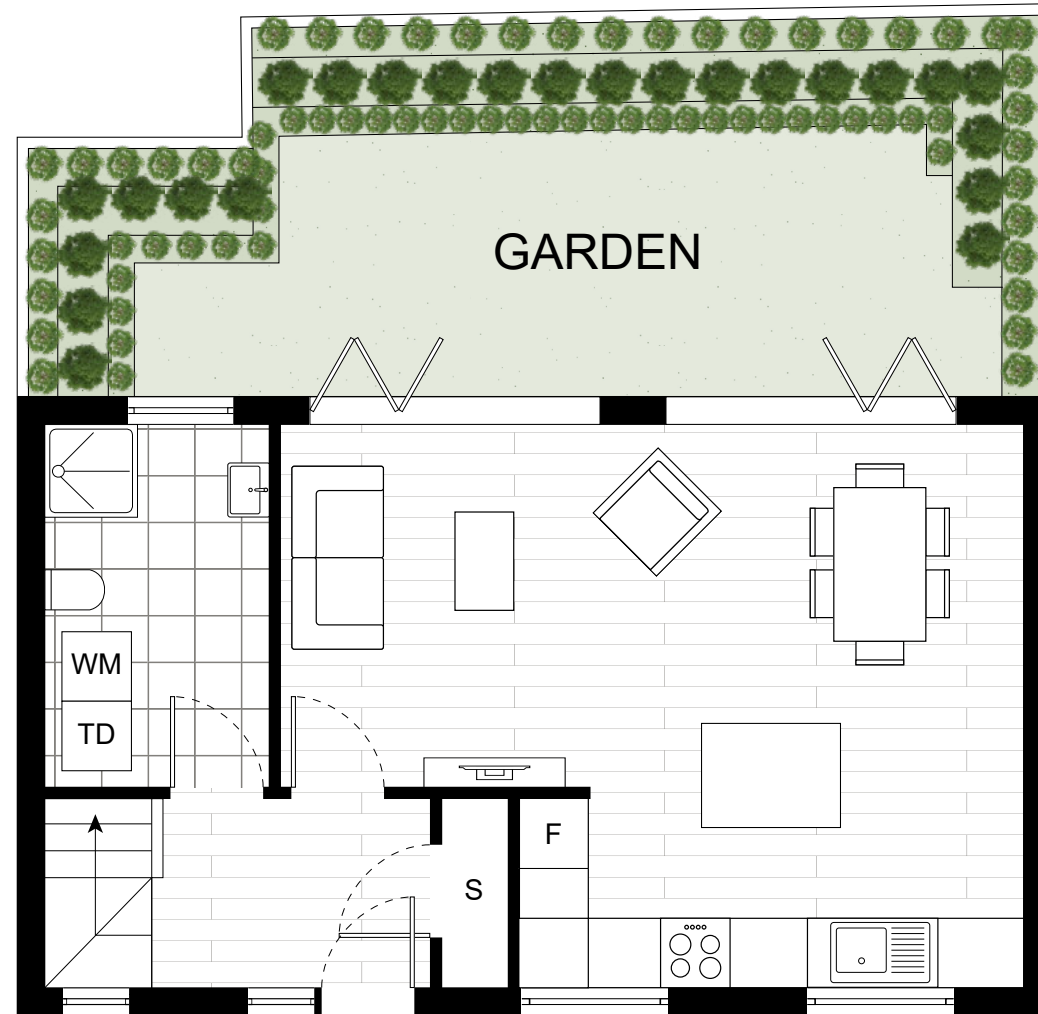
### TWO BEDROOM

INTERNAL AREA  
81.9 sq m / 882 sq ft

LIVING / DINING / KITCHEN AREA  
6420 x 4860 mm

BEDROOM 1  
3540 x 3550 mm

BEDROOM 2  
3760 x 3550 mm



- F ..... FRIDGE
- DW ..... DISH WASHER
- WM ..... WASHING MACHINE
- TD ..... TUMBLE DRYER
- S ..... STORAGE
- C ..... CUPBOARD
- W ..... WARDROBE
- B ..... BALCONY

## SPECIFICATIONS

### KITCHENS

- Solid surface worktops
- Solid surface splash
- LED under-unit strip lighting
- Induction integrated hob
- Integrated fridge/freezer
- Integrated dishwasher
- Integrated washer/dryer (in utility cupboard where possible)
- Integrated cooker hood
- Under mounted sink
- Integrated combined microwave and oven
- Integrated oven
- Integrated microwave oven

### BEDROOMS

- TV points
- Built-in wardrobes

### BATHROOMS & ENSUITES

- Brushed Black sanitary ware
- Mirrored vanity cabinet and vanity base unit
- Walk-in shower with brushed black thermostatic valve
- Recessed ceiling down lighters
- Brushed black heated ladder towel rail
- Free standing bath with brushed brass single lever wall mounted bath mixer tap (apartment 4 only)

### ELECTRICAL AV, TELEPHONE & DATA

- BT points (master bedroom and bedrooms)
- Digital TV/satellite
- FM and DAB radio
- Virgin (living rooms)
- 4 DSSO sockets with USB connection (master bedroom)

### LIGHTING

- Black dimmer switches/spurs throughout
- Down lights throughout
- Feature spot lighting (kitchen)
- Recessed ceiling down lighters and wall lights (bathrooms and en-suites)

### WALL & FLOOR FINISHES

- Stone tiled walls
- Stone flooring
- Oak engineered wood flooring (living, hallways and kitchen)
- 100% wool carpet to bedrooms

### SAFETY, SECURITY & COMFORT

- Audio and video entry system with integrated doorbell connected to phone app
- Black Aluminium front door with 5 lever mortice deadlocks
- Underfloor heating to all living areas
- Thermostat with the facility to operate from phone application (master, bedrooms, halls)
- Bi-fold Doors





ARTHUR MEWS



Newhomes@eostateagents.co.uk  
0203 633 8911

[www.eostateagents.co.uk](http://www.eostateagents.co.uk)

Redfinch Investments Ltd  
[info@redfinchinvest.com](mailto:info@redfinchinvest.com)